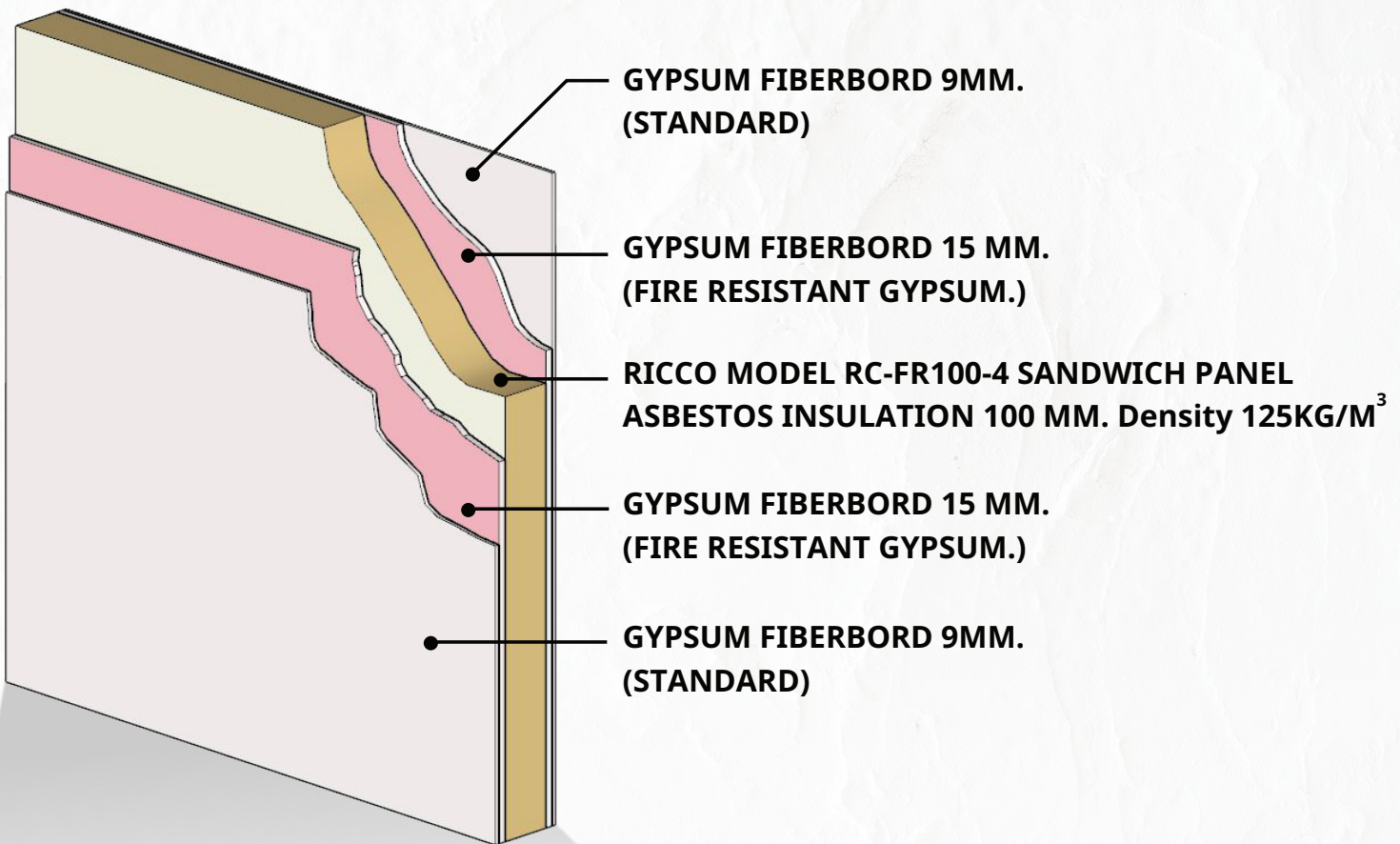




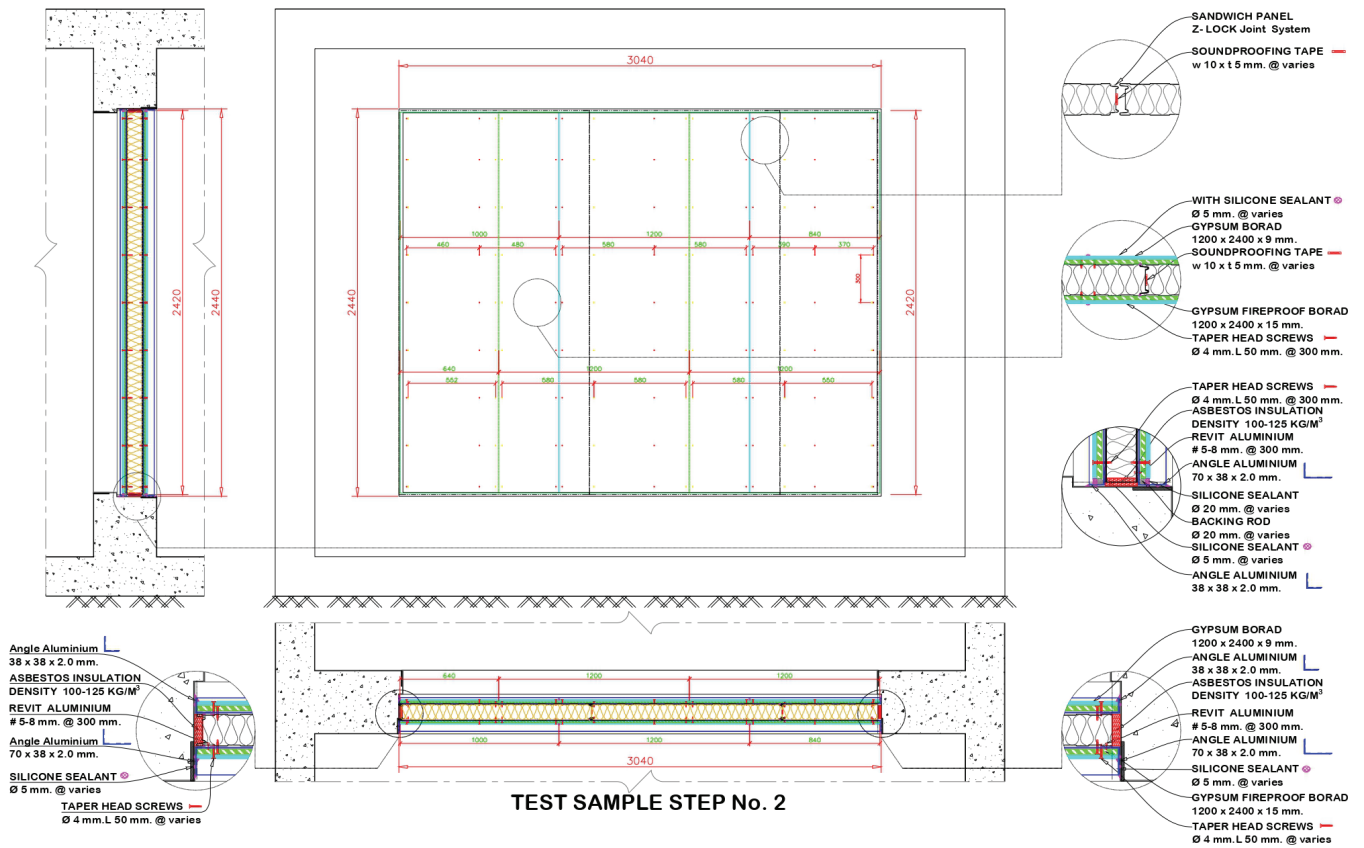
LABORATORY REPORT ON

**Airborne Sound Transmission-Loss
Measurement of**

**The Double Layer Gypsum Board
and Sandwich Panel**



STC 39 - Double Layer Gypsum Board



SPECIFICATION



INSTALLATION

Table 1. The airborne sound transmission-loss (TL) for each individual 1/3 octave band center frequency and STC rating of the *SAC 01 C35* test sample.

Test panel: *RICCO* sandwich panel (100 mm. of thickness) and *FireBloc* Gypsum board (15 mm. of thickness) + standard Gypsum board (9 mm. of thickness).

Client: SUPA RICH Co., Ltd.

Test sample size: 3040mm. x 2440mm. x mm.

Date of test: 15 November 2022.

Temperature: 27°C

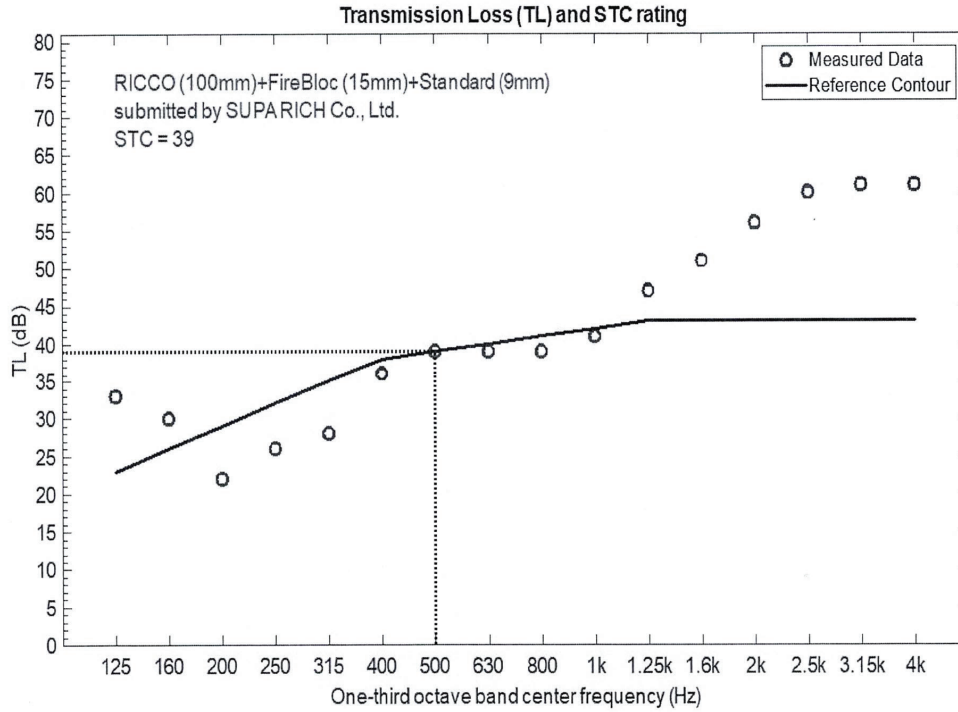
Relative humidity: 50%

Frequency (Hz)	TL (dB)
125	33
160	30
200	22
250	26
315	28
400	36
500	39
630	39
800	39
1000	41
1250	47
1600	51
2000	56
2500	60
3150	61
4000	61

STC	39
Maximum Deficiency	7 dB
Sum of Deficiency	26 dB




Figure 1. The airborne sound transmission-loss (TL) and the STC rating of the test sample.



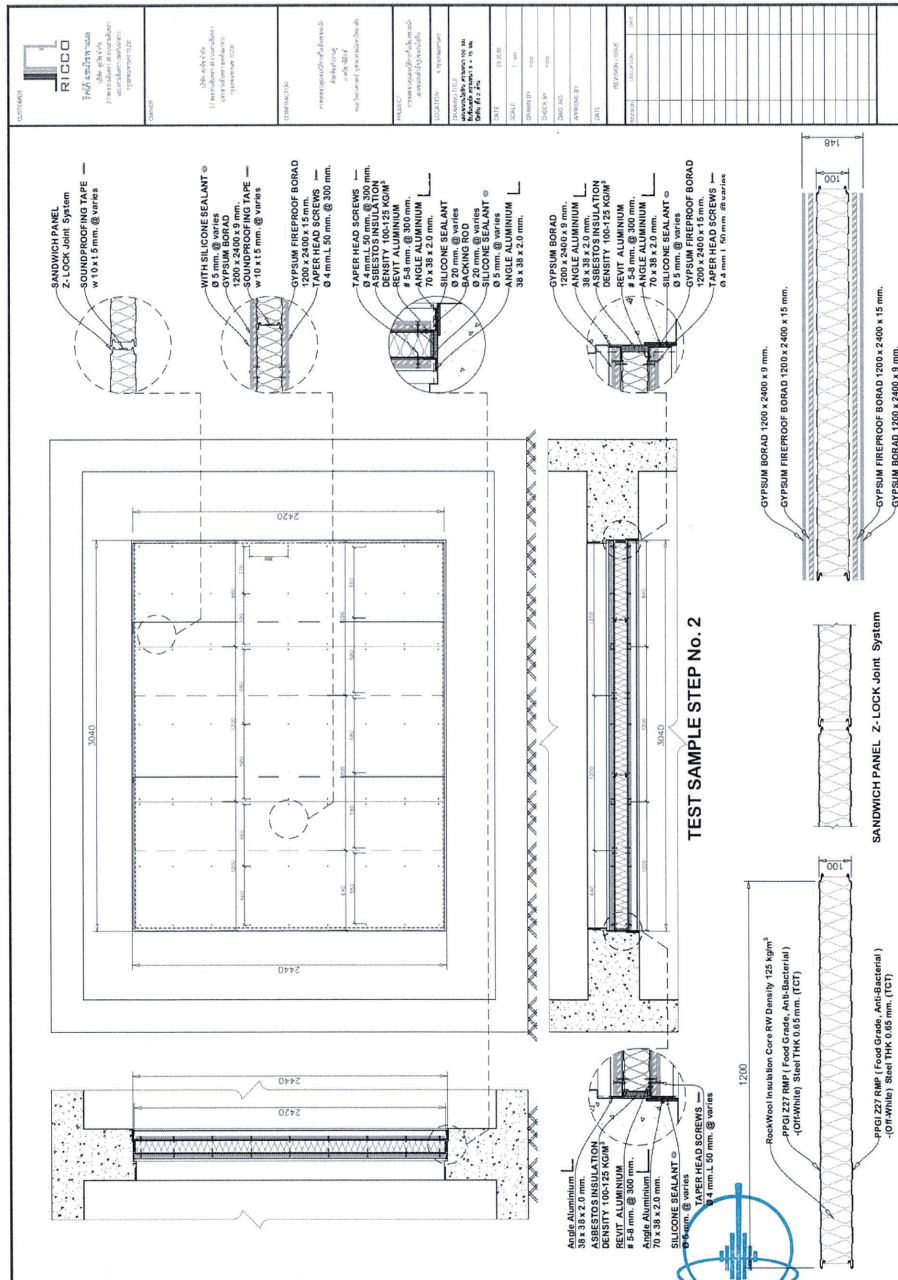

ศูนย์บริการวิชาการ
คณะสถาปัตยกรรมศาสตร์
จุฬาลงกรณ์มหาวิทยาลัย

Chulanwong

 TL measurement report of double layer Gypsum board and sandwich panel.

RESULT

Figure 2. Specification of the test sample.

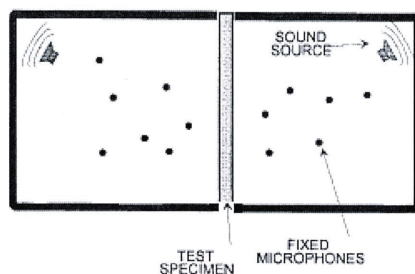


TL measurement report of double layer Gypsum board and sandwich panel.

ศูนย์บริการวิชาการ
มหาวิทยาลัยเทคโนโลยีราชมงคล
พระนคร

Aleelamwong

Figure 3. Schematic drawing of the measurement set-up in a double-reverberation chamber.



RESULT